

GRAHAM

WATCHMAKERS SINCE 1695

GRAHAM
WATCHMAKERS SINCE 1695

2019 EDITION

REFERENCE GUIDE

INDEX

2CCAC.B02A	85	2CVAS.B22A	59	2CXBS.A02A	103
2CCAC.B16A	81	2CVAS.B26A	31	2CXBS.B04A	103
2CCAC.B33A	79	2CVAS.B30A	47	2CXBS.S06A	103
2CCAC.G03A	81	2CVAS.G02A	31	2CXCS.A02A	104
2CCAC.S01A	85	2CVAS.S03A	31	2CXCS.B04A	104
2CCAC.U01A	85	2CVAS.U01A	33	2CXCS.S06A	104
2CCAC.U04A	81	2CVAS.U04A	59		
2CCAU.B01A	83	2CVAS.U05A	59	2GGBP.B01A	121
2CCAU.B02A	83	2CVAS.U08A	57	2GGBP.U01A	117
2CCAU.B28A	87	2CVAS.U10A	53	2GGCP.C01A	114
2CCAU.B31A	79	2CVAS.U11A	53	2GGCP.U02A	114
2CCAU.B32A	79	2CVAS.U12A	51	2GGCP.W01A	113
2CCAU.S01A	83				
		2CVAV.B17A	35	2OVGG.B16A	99
2CCBK.B11A	77	2CVAV.B19A	36	2OVGG.B26A	99
2CCBK.B15A	77	2CVAV.B18A	36	2OVGS.B12A	97
2CCBK.B25A	73	2CVAV.B28A	63	2OVGS.B26A	97
2CCBK.B25B	71	2CVAV.G03A	61	2OVGS.U06B	97
2CCBK.B30A	77	2CVAV.U03A	36		
2CCBK.B35A	69	2CVBC.B15A	27	2STD.C.B08A	109
2CCBK.G06A	75	2CVBC.C01A	27	2STD.C.B08B	109
2CCBK.O01A	75	2CVBC.G01A	27		
2CCBK.V01A	75	2CVBC.S07A	25	2STE.A.B12A	107
		2CVBC.U02A	29	2STE.A.B15A	107
2CDAB.B02A	93	2CVCS.S01A	39	2STE.A.U02A	107
2CDAZ.B04A	93	2CVCS.B20A	39		
				2SXAK.B02A	3
2CVAK.B26A	29	2CVDS.B25A	21	2SXAK.G01A	3
2CVAK.G02A	29	2CVDS.B29A	13	2SXAS.B05A	7
2CVAK.G05A	45	2CVDS.B29B	17	2SXAS.B06A	7
2CVAK.S03A	29	2CVDS.B29C	17		
2CVAK.U01A	29	2CVDS.B29D	19	ENV051	130
2CVAS.A01A	53	2CVDS.B29E	19		
2CVAS.B01A	33	2CVDS.B29F	19		
2CVAS.B02A	33	2CVDS.C02A	21		
2CVAS.B03A	33	2CVDS.S02A	21		
2CVAS.B14A	49	2CVDS.U09A	21		
2CVAS.B27A	53				
2CVAS.B21A	59				

TABLE OF CONTENT

SWORDFISH	2
SWORDFISH BRONZE	2
SWORDFISH STEEL	6
CHRONOFIGHTER	12
CHRONOFIGHTER GRAND VINTAGE	12
CHRONOFIGHTER VINTAGE	24
CHRONOFIGHTER VINTAGE LTD	44
CHRONOFIGHTER SUPERLIGHT CARBON TOURBILLON	68
CHRONOFIGHTER SUPERLIGHT CARBON	70
CHRONOFIGHTER TARGET	78
CHRONOFIGHTER (OTHER MODELS)	82
CHRONOFIGHTER PRODIGE	92
CHRONOFIGHTER GMT	96
CHRONOFIGHTER CLASSIC	102
SILVERSTONE	106
SILVERSTONE RS RACING	106
SILVERSTONE RS GMT	108
GEO.GRAHAM	112
GEO.GRAHAM TOURBILLON	112
GEO.GRAHAM TOURBILLON ORRERY	116
GENERAL INFORMATION	125
REPAIR TOOL	126
STRAPS	128
WATCH BOX REVIEW	132
DISPLAY FIXTURES	133

USP

Iconic design with two portholes (magnifiers +20%) on hours and minutes counters
Automatic chronograph with TOP label movement
Decorated and refined movement with blue screw made for GRAHAM
Co-axial 12 hours counter with second at 9
Bronze case - Alloy (CuSn8) used by the naval industry and titanium (Ti2) case back – good resistance to corrosion, wear and allergy free
Two magnifying glasses for better reading comfort of the counters
Satin-brushed bezel
Sunbrushed dial
Coloured fabric strap (moisture-wicking fabric)

Functions

Chronograph (seconds, 30 minutes counter)
Hours, minutes, seconds

Calibre

G1710, automatic chronograph with co-axial counters
28'800 A/h (4Hz)
Incabloc shock absorber
34 jewels
Blue screw, circular-grained decorated plate and Côtes de Genève decorated bridges
Power reserve: 48 hours

Case

46 mm bronze (alloy CuSn8 – used by the naval industry)
Bronze crown with 2 joints (improved water resistance) and pushers with «Clous de Paris» high grip pattern
Flat sapphire crystal with two portholes (magnifying glasses +20%), anti-reflective coating on the underside
See-through titanium caseback

Bezel

Bronze satin-brushed

Water resistance

330 feet / 100 m / 10 bar

Dial

Black or green sunbrushed dial with white Super Lumi-Nova indexes
Golden hands (18K) with white Super-LumiNova
Golden chrono hand (18K)
Golden hours and minutes counters' hands (18K) with white Super-LumiNova
Golden seconds counter's hand

Strap

Black or green rubber mesh pattern
Delivered on an additional fabric strap
Bronze pin buckle

Strap and buckle options on page 64



2SXAK.B02A

Ø 46mm, bronze case
Black dial
Black rubber mesh pattern strap



2SXAK.G01A

Ø 46mm, bronze case
Green dial
Green rubber mesh pattern strap



GRAHAM
SWORDFISH
BRONZE

Automatic Chronograph
Two Sapphire Portholes

GRAHAM
Micro-mechanical since 1965

Boulevard des Eplatures 38, 2300 La Chaux-de-Fonds, Switzerland | +41 (0)32 910 98 88 | george@graham1695.com

www.graham1695.com



2SXAK.B02A



2SXAK.G01A

Delivered with an additional fabric strap

USP

Iconic design with two portholes (magnifiers +20%) on hours and minutes counters
Automatic chronograph with TOP label movement
Decorated and refined movement with blue screw made for GRAHAM
Co-axial 12 hours counter with second at 9
Two magnifying glasses for better reading comfort of the counters
Steel satin-brushed bezel
Sunbrushed dial
Coloured fabric strap (moisture-wicking fabric) or calf leather strap

Functions

Chronograph (seconds, 30 minutes counter)
Hours, minutes, seconds

Calibre

G1710, automatic chronograph with co-axial counters
28'800 A/h (4Hz)
Incabloc shock absorber
34 jewels
Blue screw, circular-grained decorated plate and Côtes de Genève decorated bridges
Power reserve: 48 hours

Case

46 mm steel
Steel crown with 2 joints (improved water resistance) and pushers with «Clous de Paris» high grip pattern
Flat sapphire crystal with two portholes (magnifying glasses +20%), anti-reflective coating on the underside
See-through crystal caseback

Bezel

Steel satin-brushed

Water resistance

330 feet / 100 m / 10 bar

Dial

(2SXAS.B05A) Black sunbrushed dial with white Super-LumiNova indexes and red snailed counters
Rhodium hands with white Super-LumiNova coating
Rhodium chrono hand with red tip.
Rhodium counters' hands

(2SXAS.B06A) Black sunbrushed dial with beige Super-LumiNova arabic numerals
Rhodium hands with beige Super-LumiNova coating and numerals
Red chrono hand
Red varnished rhodium hours and minutes counter's hands
Rhodium seconds counter's hand

Strap

Black rubber mesh pattern strap and steel pin buckle – delivered with an additional fabric strap (2SXAS.B05A)
Black calf leather strap with leather wristband (2SXAS.B06A)
Delivered with a black rubber mesh pattern
Strap and buckle options on page 64



2SXAS.B05A

Ø 44mm, steel case
Black dial with red counters
Black rubber mesh pattern strap



2SXAS.B06A

Ø 44mm, steel case
Black dial
Black calf leather strap with red and off-white stitches

SWORDFISH STEEL

NEW



2SXAS.B05A



2SXAS.B05A

Delivered with an additional fabric strap
Available on different colours of rubber, fabric straps



2SXAS.B06A

Black leather wristband available for all Swordfish models



USP

The Original: historical timepieces inspired by watches used in Military Air Forces
Horizontal fine brushed dial
Automatic chronograph
Date at 9 o'clock with magnifier
Domed sapphire glass with large aperture
Steel satin-brushed bezel
Fast-action start / stop steel trigger
See-through sapphire crystal case back
Rubber mesh pattern strap / available on calf leather strap

Functions

Chronograph (seconds, 30 minutes counter)
Date at 9 o'clock with magnifier
Hours, minutes, seconds

Calibre

G1747 automatic chronograph
28'800 A/h (4Hz)
Incabloc shock absorber
25 jewels
Power reserve: 48 hours
Movement certification Chronofiable®
(improved shock absorption)

Case

47 mm steel
Steel fast-action start / stop trigger and reset pusher
Domed sapphire crystal with magnifier, anti-reflective coating on the underside
See-through sapphire crystal case back

Bezel

Steel satin-brushed

Water resistance

330 feet / 100 m / 10 bar

Dial

Black horizontal fine brushed dial with white Arabic numerals coated with white Super-LumiNova
Rhodium hours hands coated with white Super-LumiNova
Rhodium chrono hand with red tip
Snail minutes counter with red hand
Snail second counter with rhodium compass hand

Strap

Black rubber mesh pattern strap
Also available on calf leather strap
Steel pin buckle

Strap and buckle options on page 64



2CVDS B29A

Ø 47mm, steel case with satin-brushed bezel
Black horizontal fine brushed dial
Black rubber mesh pattern strap



2CVDS B29A

Available on coloured rubber mesh pattern strap



The advertisement features a close-up of the watch's side, highlighting the large, polished steel chronograph pusher and the crown. The watch has a black dial with white Arabic numerals, a date window at 3 o'clock, and a small seconds sub-dial at 6 o'clock. The brand name 'GRAHAM' is printed below the 12 o'clock marker. The watch is fitted with a black leather strap with a white stitching pattern. The background is a solid dark red.

**CHRONOFIGHTER
GRAND VINTAGE**

Automatic Chronograph
Start/Stop Trigger in Steel

GRAHAM
SWISS MADE

www.graham1695.com

Boulevard des Eplatures 38, 2300 La Chaux-de-Fonds, Switzerland | +41 (0)32 910 98 88 | george@graham1695.com



USP

The Graffiti collection: sapphire glass laser engraved

Horizontal fine brushed dial

Automatic chronograph

Date at 9 o'clock with magnifier

Domed sapphire glass with large aperture and different laser engravings:

- "Win" Chinese character
- "Should I Stay Should I Go" – referring to The Clash band song
- "Skull" - 3 different engravings

Steel satin-brushed bezel

Fast-action start / stop steel trigger

See-through sapphire crystal case back

Rubber mesh pattern strap / available on calf leather strap

Limited edition: 388 (2CVDS.B29C); 5 (2CVDS.B29B); 50 (2CVDS.B29D, B29E, B29F) and serial number engraved on the sapphire crystal

Functions

Chronograph (seconds, 30 minutes counter)

Date at 9 o'clock with magnifier

Hours, minutes, seconds

Calibre

G1747 automatic chronograph

28'800 A/h (4Hz)

Incabloc shock absorber

25 jewels

Power reserve: 48 hours

Movement certification Chronofiable®
(improved shock absorption)

Case

47 mm steel

Steel fast-action start / stop trigger and reset pusher

Domed sapphire crystal with different laser engravings, magnifier, anti-reflective coating on the underside

Limited edition serial number engraved on the sapphire glass

Delivered with a blank sapphire crystal

See-through sapphire crystal case back

Bezel

Steel satin-brushed

Water resistance

330 feet / 100 m / 10 bar

Dial

Black horizontal fine brushed dial with white Arabic numerals coated with white Super-LumiNova

Rhodium hours hands coated with white Super-LumiNova

Rhodium chrono hand with red tip

Snail minutes counter with red hand

Snail second counter with rhodium compass hand

Strap

Black rubber mesh pattern strap

Also available on calf leather strap

Steel pin buckle

Strap and buckle options on page 64



2CVDS.B29C

2CVDS.B29B

Ø 47mm, steel case with satin-brushed bezel
Black horizontal fine brushed dial
Different engravings on the sapphire glass
Black rubber mesh pattern strap



2CVDS.B29D

Ø 47mm, steel case with satin-brushed bezel
Black horizontal fine brushed dial
Different engravings on the sapphire glass
Black rubber mesh pattern strap



2CVDS.B29E



2CVDS.B29F

USP

The Original: historical timepieces inspired by watches used in Military Air Forces
 Sunbrushed dial with radial gradient
 Automatic chronograph
 Date at 9 o'clock with magnifier
 Domed sapphire glass with large aperture
 Steel satin-brushed bezel
 Fast-action start / stop steel trigger
 See-through sapphire crystal case back
 Rubber mesh pattern strap / available on calf leather strap



2CVDS.U09A

Ø 47mm steel case with satin-brushed bezel
 Blue sunbrushed dial
 Blue rubber mesh pattern strap



2CVDS.C02A

Ø 47mm steel case with satin-brushed bezel
 Brown sunbrushed dial
 Black rubber mesh pattern strap

Functions

Chronograph (seconds, 30 minutes counter)
 Date at 9 o'clock with magnifier
 Hours, minutes, seconds

Calibre

G1747 automatic chronograph
 28'800 A/h (4Hz)
 Incabloc shock absorber
 25 jewels
 Power reserve: 48 hours
 Movement certification Chronofiable®
 (improved shock absorption)

Case

47 mm steel case
 Steel fast-action start / stop trigger and reset pusher
 Domed sapphire crystal with magnifier, anti-reflective coating on the underside
 See-through sapphire crystal case back

Bezel

Steel satin-brushed

Water resistance

330 feet / 100 m / 10 bar

Dial

Blue, brown, silver or black sunbrushed dial with radial gradient
 Golden hands and numerals coated with white Super-LumiNova
 Snailed minutes and seconds counter with golden hands

Strap

Blue, black or green rubber mesh pattern strap
 Also available on calf leather strap
 Steel pin buckle

Strap and buckle options on page 64



2CVDS.S02A

Ø 47mm steel case with satin-brushed bezel
 Silver sunbrushed dial
 Green rubber mesh pattern strap



2CVDS.B25A

Ø 47mm steel case with satin-brushed bezel
 Black sunbrushed dial
 Black rubber mesh pattern strap



**CHRONOFIGHTER
GRAND VINTAGE**

Automatic Chronograph
Start/Stop Trigger in Steel

GRAHAM
WATCHMAKERS

Boulevard des Eplatures 38, 2300 La Chaux-de-Fonds, Switzerland | +41 (0)32 910 98 88 | george@graham1695.com

www.graham1695.com



2CVDS.S02A



2CVDS.LU09A

Also available on calf leather straps
#triggeryourstyle

USP

The Original: historical timepieces inspired by watches used in Military Air Forces
 Sunbrushed dial with radial gradient
 Automatic chronograph
 GMT / second time zone
 Big date with double disc at 12 o'clock
 Fast-action start / stop trigger - co-axial crown and pushbutton
 Unidirectional rotating ceramic (ZrO₂) bezel with 24 positions and lateral helical toothing decoration
 See-through sapphire case back
 Hand-sewn calf leather straps

Functions

Chronograph (seconds, 30 minutes counter)
 GMT / second time zone
 Big date with double disc at 12 o'clock
 Hours, minutes, seconds

Calibre

G1733, automatic chronograph
 28'800 A/h (4Hz)
 Incabloc shock absorber
 28 jewels
 Power reserve: 48 hours
 Movement certification Chronofiable®
 (improved shock absorption)

Case

44 mm steel
 Steel fast-action start / stop trigger and reset pusher
 Domed sapphire crystal, anti-reflective coating
 See-through sapphire crystal case back

Bezel

Ceramic (ZrO₂) with GMT scale
 Unidirectional rotating bezel with 24 positions and lateral helical toothing decoration

Water resistance

330 feet / 100 m / 10 bar

Dial

Light grey, green, brown, grey or blue sunbrushed with radial gradient
 White Super-LumiNova hands, numerals and indexes (Grade A. highly luminescent)
 GMT hand with red tip and white SuperlumiNova

Strap

Hand-sewn black/green/brown/blue calf leather
 Steel pin buckle
Strap and buckle options on page 64



2CVBC.S07A

Ø 44mm, steel case
 Light grey sunbrushed dial
 Hand-sewn black calf leather strap



2CVBC.G01A

Ø 44mm, steel case
Green sunbrushed dial
Hand-sewn green calf leather strap



2CVBC.C01A

Ø 44mm, steel case
Brown sunbrushed dial
Hand-sewn brown calf leather strap



2CVBC.B15A

Ø 44mm, steel case
Grey sunbrushed dial
Hand-sewn black calf leather strap



2CVBC.U02A

Ø 44mm, steel case
Blue sunbrushed dial
Hand-sewn blue calf leather strap

SOLD OUT

USP

The Original: historical timepieces inspired by watches used in Military Air Forces
Sunbrushed vintage dial with vintage colours, indexes and hands
Automatic chronograph
Day-date
Bronze case – alloy (CuSn8) used by the naval industry
Bronze satin-brushed
Fast-action start / stop trigger



2CVAK.S03A

Ø 44mm, bronze case
Sunbrushed silver dial
Black rubber mesh pattern strap



2CVAK.U01A

Ø 44mm, bronze case
Blue sunray-decorated dial
Hand-sewn blue calf leather strap

Functions

Chronograph (seconds, 30 minutes counter)
Day-date at 9 o'clock
Hours, minutes, seconds

Calibre

G1747, automatic chronograph
28'800 A/h (4Hz)
Incabloc shock absorber
25 jewels
Power reserve: 48 hours
Movement certification Chronofiable® (improved shock absorption)

Case

44 mm bronze (alloy CuSn8 – used by the naval industry) with sandblasted and satin-brushed finishing
Bronze fast-action start / stop trigger and reset pusher
Domed sapphire crystal, anti-reflective coating
See-through sapphire crystal case back

Bezel

Bronze satin-brushed

Water resistance

330 feet / 100 m / 10 bar

Dial

Silver, blue, green or black sunbrushed
Golden indexes and hands
White Super-Luminova numerals and indexes (2CVAK.U01A)
Hour hands coated with white Super-LumiNova (grade A)
Golden chrono hand with red tip

Strap

Black, green rubber mesh pattern / blue, brown calf leather
Bronze pin buckle

Strap and buckle options on page 64



2CVAK.G02A

Ø 44mm, bronze case
Sunbrushed green dial
Green rubber mesh pattern strap



2CVAK.B26A

Ø 44mm, bronze case
Sunbrushed black dial
Hand-sewn brown calf leather strap

USP

The Original: historical timepieces inspired by watches used in Military Air Forces
 Sunbrushed vintage dial with vintage colours, indexes and hands
 Automatic chronograph
 Day-date
 Fast-action start / stop trigger
 Hand-sewn calf leather straps

Functions

Chronograph (seconds, 30 minutes counter)
 Day-date at 9 o'clock
 Hours, minutes, seconds

Calibre

G1747, automatic chronograph
 28'800 A/h (4Hz)
 Incabloc shock absorber
 25 jewels
 Power reserve: 48 hours
 Movement certification Chronofiable® (improved shock absorption)

Case

44 mm steel
 Steel fast-action start / stop trigger and reset pusher
 Domed sapphire crystal, anti-reflective coating
 See-through sapphire crystal case back

Bezel

Steel

Water resistance

330 feet / 100 m / 10 bar

Dial

Silver, green or black sunbrushed
 Golden indexes and hands
 Hour hands coated with white Super-LumiNova (grade A)
 Golden chrono hand with red tip

Strap

Hand-sewn camel / brown / black calf leather
 Steel pin buckle

Strap and buckle options on page 64



2CVAS.S03A

Ø 44mm, steel case
 Sunbrushed silver dial
 Hand-sewn camel calf leather strap



2CVAS.G02A

Ø 44mm, steel case
 Sunbrushed green dial
 Hand-sewn brown calf leather strap



2CVAS.B26A

Ø 44mm, steel case
 Sunbrushed black dial
 Hand-sewn black calf leather strap

USP

The Original: historical timepieces inspired by watches used in Military Air Forces
Grained vintage dial with vintage colours, indexes and hands
Automatic chronograph
Day-date
Fast-action start / stop trigger
Hand-sewn calf leather straps

Functions

Chronograph (seconds, 30 minutes counter)
Day-date at 9 o'clock
Hours, minutes, seconds

Calibre

G1747, automatic chronograph
28'800 A/h (4Hz)
Incabloc shock absorber
25 jewels
Power reserve: 48 hours
Movement certification Chronofiable® (improved shock absorption)

Case

44 mm steel
Steel fast-action start / stop trigger and reset pusher
Domed sapphire crystal, anti-reflective coating
See-through sapphire crystal case back

Bezel
Steel

Water resistance
330 feet / 100 m / 10 bar

Dial

Black grained
Beige/ white Super-LumiNova hands, numerals and indexes
Red minute counter's hand (2CVAS.B03A)

Strap

Hand-sewn brown/black/camel /blue calf leather
Steel pin buckle
Strap and buckle options on page 64



2CVAS.B01A

Ø 44mm, steel case
Black grained dial
Hand-sewn brown calf leather strap



2CVAS.B02A

Ø 44mm, steel case
Black grained dial
Hand-sewn black calf leather strap



2CVAS.B03A

Ø 44mm, steel case
Black grained dial
Hand-sewn camel calf leather strap



2CVAS.U01A

Ø 44mm, steel case
Blue sunray-decorated dial
Hand-sewn blue calf leather strap

USP

The Original: historical timepieces inspired by watches used in Military Air Forces
 Riveted dial with radial gradient and vintage colours, indexes and hands
 Aged steel with grey PVD case: sophisticated accelerated aging process which gives the old metal aspect to the steel case initially coated with dark grey PVD
 RAF Halifax aircraft stamped on the case back (only 2CVAV.B17A)
 Automatic chronograph
 Day-date
 Fast-action start / stop trigger
 Aged coloured cotton canvas/ denim straps
 Limited edition: 250 pieces each (on the dial)

Functions

Chronograph (seconds, 30 minutes counter)
 Day-date at 9 o'clock
 Hours, minutes, seconds

Calibre

G1747, automatic chronograph
 28'800 A/h (4Hz)
 Incabloc shock absorber
 25 jewels
 Power reserve: 48 hours
 Movement certification Chronofiable® (improved shock absorption)

Case

44 mm aged steel with grey PVD – old metal aspect
 Aged steel with grey PVD fast-action start / stop trigger and reset pusher
 Domed sapphire crystal, anti-reflective coating
 Aged steel with grey PVD case back with RAF Halifax aircraft stamped (2CVAV.B17A)
 Other references with smoked sapphire case back

Bezel

Aged steel with grey PVD

Water resistance

330 feet / 100 m / 10 bar

Dial

Black / blue riveted with radial gradient and limited edition serial number
 Beige/ white Super-LumiNova hands, numerals and indexes
 Green/white or rhodiated chrono hands
 Green / red and rhodiated counter's hand

Strap

Aged green or beige cotton canvas / anthracite and blue denim

Titanium pin buckle

Strap and buckle options on page 64



2CVAV.B17A

Ø 44mm, aged steel case with grey PVD
 Black dial
 Green canvas strap
 Limited edition: 250 pieces





2CVAV.B19A

Ø 44mm, aged steel case with grey PVD
Black dial
Anthracite denim strap
Limited edition: 250 pieces



2CVAV.B18A

Ø 44mm, aged steel case with grey PVD
Black dial
Beige canvas strap
Limited edition: 250 pieces



2CVAV.L03A

Ø 44mm, aged steel case with grey PVD
Blue dial
Blue denim strap
Limited edition: 250 pieces



2CVAV.B19A



2CVAV.B19A

Also available on fabric, rubber straps
[#triggeryourstyle](#)

USP

Doctor's watch: Mechanical watch which enables to monitor heartbeat and measure pulse at a glance - inspired by 1920s medical timepieces

Graduation for 30 pulsations: The chrono hand is stopped at the patient's 30th heartbeat and the dial indicates the frequency per minute avoiding any calculation - immediate and precise reading

Automatic chronograph with pulsometer

Sunbrushed dial with pulsometer graduation

Day-date

Fast-action start / stop trigger

Hand-sewn calf leather straps

Limited edition: 250 pieces each (on the dial)

Functions

Chronograph (seconds)

Day-date at 9 o'clock

Hours, minutes, seconds

Calibre

G1718, automatic chronograph

28'800 A/h (4Hz)

Incabloc shock absorber

25 jewels

Power reserve: 48 hours

Movement certification Chronofiable® (improved shock absorption)

Case

44mm steel

Steel fast-action start/stop trigger and reset pusher

Domed sapphire crystal, anti-reflective coating

See-through sapphire crystal case back

Bezel

Steel

Water resistance

330 feet / 100 m / 10 bar

Dial

Silver / black sunbrushed dials with green or white pulsometer scale

Golden hands coated with white Super-LumiNova (Grade A, highly luminescent)

Indexes with golden ring, coated with Super-LumiNova (Grade A, highly luminescent)

Snail seconds counter with golden hand

Limited edition number at 9 o'clock

Strap

Hand-sewn green/black calf leather

Steel pin buckle

Strap and buckle options on page 64



2CVCS.S01A

Ø 44mm, steel case
Sunbrushed silver dial with pulsometer
Hand-sewn green calf leather strap
Limited edition: 250 pieces



2CVCS.B20A

Ø 44mm, steel case
Sunbrushed black dial with pulsometer
Hand-sewn black calf leather strap
Limited edition: 250 pieces



2CVCS.B20A

Also available on calf leather or rubber straps
[#triggeryourstyle](#)



2CVCS.S01A

Also available on calf leather or fabric straps
[#triggeryourstyle](#)



2CVCS.S01A



USP

Overlord operation commemorative watch – code name for the battle of Normandy (D-Day) referring to the Allied invasion on five beachheads
75th anniversary in 2019
Green sandblasted vintage dial with vintage numerals font used on US Air Force aircraft fuselage
Indian head at 6 o'clock which recalls the second US infantry division
Automatic chronograph
Day-date
Bronze case – alloy (CuSn8) used by the naval industry
Bronze satin-brushed
Fast-action start / stop trigger
Limited edition: 75 pieces

Functions

Chronograph (seconds, 30 minutes counter)
Day-date at 9 o'clock
Hours, minutes, seconds

Calibre

G1747, automatic chronograph
28'800 A/h (4Hz)
Incabloc shock absorber
25 jewels
Power reserve: 48 hours
Movement certification Chronofiable® (improved shock absorption)

Case

44 mm bronze (alloy CuSn8 – used by the naval industry) with sandblasted and satin-brushed finishing
Bronze fast-action start / stop trigger and reset pusher
Domed sapphire crystal, anti-reflective coating
See-through sapphire crystal titanium case back with limited edition engraved

Bezel

Bronze satin-brushed

Water resistance

330 feet / 100 m / 10 bar

Dial

Green sandblasted dial – hour circle with white Super-LumiNova numerals using US Air Force font
Golden hours hands coated with white Super-Luminova
White chrono hand
Snail minutes counter with Indian head and red hand
Snail seconds counter with red hand

Strap

Green rubber mesh pattern
Delivered with an additional calf leather strap
Bronze pin buckle
Strap and buckle options on page 64



2CVAK.G05A

Ø 44mm, bronze case
Green sandblasted dial
Green rubber mesh pattern strap
Limited edition: 75 pieces



2CVAK.G05A

Delivered with an additional calf leather strap

USP

D-Day Commemorative watch. D-Day, also called Normandy landings, refers to the Allied forces assault on the morning of June 6, 1944 on the beaches of Normandy, France 75th anniversary in 2019

Grained dial with a five-pointed circled star used on WW2 Allied & US

Army vehicle, "D-Day" inscription and "1944, June 6" inscription

Automatic chronograph

Day-date

Fast-action start / stop trigger

Rubber mesh pattern strap

Limited edition: 75 pieces

Functions

Chronograph (seconds, 30 minutes counter)

Day-date at 9 o'clock

Hours, minutes, seconds

Calibre

G1747, automatic chronograph

28'800 A/h (4Hz)

Incabloc shock absorber

25 jewels

Power reserve: 48 hours

Movement certification Chronofiable®
(improved shock absorption)

Case

44 mm steel

Steel fast-action start / stop trigger and
reset pusher

Domed sapphire crystal, anti-reflective
coating

See-through sapphire crystal case back

Bezel

Steel

Water resistance

330 feet / 100 m / 10 bar

Dial

Black grained dial with D-Day luminescent
inscription and limited edition serial
number

Rhodium hour hands coated with white
Super-LumiNova

White chrono hand with red tip

Minutes' counter with June 6, 1944

inscription and rhodium hand

Snail silver seconds counter with plain
black five pointed star surrounded by a 5
gap circle. Red seconds counter's hand

Strap

Black rubber mesh pattern

Also available on other coloured rubber mesh
pattern strap and coloured hand-sewn calf
leather strap

Steel pin buckle

Strap and buckle options on page 64



2CVAS.B30A

Ø 44mm, steel case
Black grained dial
Black rubber mesh pattern strap
Limited edition: 75 pieces

USP

The Original: historical timepieces inspired by watches used in Military Air Forces
 Grained vintage dial with vintage colours, indexes and hands. Silver star insignia with red and blue at 6 o'clock inspired by the American flag
 Automatic chronograph
 Day-date
 Fast-action start / stop trigger
 Hand-sewn calf leather strap
 See-through sapphire crystal case back
 Limited edition of 88 pieces (on the dial)

Functions

Chronograph (seconds, 30 minutes counter)
 Day-date at 9 o'clock
 Hours, minutes, seconds

Calibre

G1747, automatic chronograph
 28'800 A/h (4Hz)
 Incabloc shock absorber
 25 jewels
 Power reserve: 48 hours
 Movement certification Chronofiable® (improved shock absorption)

Case

44mm steel
 Steel fast-action start/stop trigger and reset pusher
 Domed sapphire crystal, anti-reflective coating
 See-through sapphire crystal case back

Bezel

Steel

Water resistance

330 feet / 100 m / 10 bar

Dial

Black grained. Snailed minutes counter featuring a silver star insignia with red and blue inspired by the American flag
 White Super-LumiNova hands, numerals and indexes

Strap

Hand-sewn camel calf leather strap
 Steel pin buckle
Strap and buckle options on page 64



2CVAS.B14A

Ø 44mm, steel case
 Black grained dial with a silver star, red and blue colours inspired by the American flag
 Hand-sewn camel calf leather strap
Limited edition: 88 pieces

USP

Painted dial with the three coloured Union Jack flag (national flag of the United Kingdom)
Automatic chronograph
Day-date
Fast-action start / stop trigger
Limited edition: 100 pieces



2CVAS.U12A



Ø 44mm, steel case
Painted dial with Union Jack flag
Blue calf leather strap with red stitches
Limited edition: 100 pieces

Functions

Chronograph (seconds, 30 minutes counter)
Day-date at 9 o'clock
Hours, minutes, seconds

Calibre

G1747, automatic chronograph
28'800 A/h (4Hz)
Incabloc shock absorber
25 jewels
Power reserve: 48 hours
Movement certification Chronofiable® (improved shock absorption)

Case

44 mm steel
Steel fast-action start / stop trigger and reset pusher
Domed sapphire crystal, anti-reflective coating
See-through sapphire crystal case back

Bezel

Steel

Water resistance

330 feet / 100 m / 10 bar

Dial

Painted dial with the three coloured Union Jack flag and limited edition serial number
Golden hands coated with white Super-LumiNova, golden indexes
Golden chrono hand
Snail silver counters
«BREXIT?» inscription at 6 o'clock on the minutes counter

Strap

Blue calf leather strap with red and white stitches
Available on brown calf leather or blue leather with white stitches
Steel pin buckle

Strap and buckle options on page 64



2CVAS.U12A

Brown calf leather strap



2CVAS.U12A

Blue calf leather strap

USP

The Artistic: vintage historical timepieces inspired by Nose Art – Decorative painting on the nose, fuselage of military aircrafts starting in the 40s
Sunbrushed vintage dials with painted pin-up girls named Belle, Lucia, Linda and Chloé
Automatic chronograph
Day-date
Fast-action start / stop trigger
Hand-sewn calf leather straps
Limited edition: 100 pieces each (on the dial)

Functions

Chronograph (seconds, 30 minutes counter)
Day-date at 9 o'clock
Hours, minutes, seconds

Calibre

G1747, automatic chronograph
G1745 (for 2CVAS.B27A – Linda – no seconds counter)
28'800 A/h (4Hz)
Incabloc shock absorber
25 jewels
Power reserve: 48 hours
Movement certification Chronofiable® (improved shock absorption)

Case

44 mm steel
Steel fast-action start / stop trigger and reset pusher
Domed sapphire crystal, anti-reflective coating
See-through sapphire crystal case back

Bezel

Steel

Water resistance

330 feet / 100 m / 10 bar

Dial

Charcoal grey, blue or black sunbrushed dial with painted pin-up girls
Pin-up girls' names Belle, Lucia, Linda, Chloé and limited edition serial number at 9
White Super-LumiNova hands, numerals and indexes
White varnish chrono hand with red tip
Rhodiated minutes and seconds' counters hands

Strap

Hand-sewn brown, blue or black calf leather
leather
Steel pin buckle
Strap and buckle options on page 64



2CVAS.A01A

Ø 44mm, steel case
Charcoal grey sunbrushed dial
Hand-sewn brown calf leather strap
Limited edition: 100 pieces



2CVAS.U11A

Ø 44mm, steel case
Blue sunbrushed dial
Hand-sewn blue calf leather strap
Limited edition: 100 pieces



2CVAS.B27A

Ø 44mm, steel case
Black sunbrushed dial
Hand-sewn black calf leather strap
Limited edition: 100 pieces



2CVAS.U10A

Ø 44mm, steel case
Blue sunbrushed dial
Hand-sewn brown calf leather strap
Limited edition: 100 pieces



CHRONOFIGHTER VINTAGE
NOSE ART LTD
 Limited Edition of 100 Pièces

GRAHAM
WATCHMAKERS SINCE 1861

Boulevard des Eplatures 38, 2300 La Chaux-de-Fonds, Switzerland | +41 (0)32 910 98 88 | george@graham1695.com



USP

The Artistic: vintage historical timepieces inspired by Nose Art – Decorative painting on the nose, fuselage of military aircrafts starting in the 40s
 Festive edition which celebrates the Chinese New Year with pin-up Kelly; a Cheongsam girl (girl dressed in a traditional body-hugging one piece Chinese dress called Cheongsam) and a white Samoyed dog painted on the dial
 Sunbrushed vintage dial
 Automatic chronograph
 Day-date
 Fast-action start / stop trigger
 Hand-sewn calf leather strap
 Limited edition: 100 pieces (serial number on the dial)

Functions

Chronograph (seconds, 30 minutes counter)
 Day-date at 9 o'clock
 Hours, minutes, seconds

Calibre

G1747, automatic chronograph
 28'800 A/h (4Hz)
 Incabloc shock absorber
 25 jewels
 Power reserve: 48 hours
 Movement certification Chronofiable® (improved shock absorption)

Case

44 mm steel
 Steel fast-action start / stop trigger and reset pusher
 Domed sapphire crystal, anti-reflective coating
 See-through sapphire crystal case back

Bezel

Steel

Water resistance

330 feet / 100 m / 10 bar

Dial

Blue sunbrushed dial with painted pin-up Kelly and a dog
 Limited edition serial number at 9
 White Super-LumiNova hands, numerals and indexes
 White varnish chrono hand with red tip
 Rhodiated minutes and seconds' counters hands

Strap

Hand-sewn blue calf leather
 Steel pin buckle

Strap and buckle options on page 64



2CVAS.U08A

Ø 44mm, steel case
 Blue sunbrushed dial
 Hand-sewn blue calf leather strap
 Limited edition: 100 pieces

USP

The Artistic: vintage historical timepieces inspired by Nose Art – Decorative painting on the nose, fuselage of military aircrafts starting in the 40s
Sunbrushed vintage dials with painted pin-up girls named Sally, Anna, Lilly and Nina
Automatic chronograph
Day-date
Fast-action start / stop trigger
Hand-sewn calf leather straps
Limited edition: 100 pieces each (on the dial)

Functions

Chronograph (seconds, 30 minutes counter)
Day-date at 9 o'clock
Hours, minutes, seconds

Calibre

G1747, automatic chronograph
28'800 A/h (4Hz)
Incabloc shock absorber
25 jewels
Power reserve: 48 hours
Movement certification Chronofiable® (improved shock absorption)

Case

44 mm steel
Steel fast-action start / stop trigger and reset pusher
Domed sapphire crystal, anti-reflective coating
See-through sapphire crystal case back

Bezel

Steel

Water resistance

330 feet / 100 m / 10 bar

Dial

Black / blue sunbrushed dial with painted pin-up girls
Pin-up girls' names Sally, Anna, Lilly, Nina and limited edition serial number at 9
White Super-LumiNova hands, numerals and indexes
White varnish chrono hand with red tip
Rhodiated minutes and seconds' counters hands

Strap

Hand-sewn black /green /blue calf leather
Steel pin buckle
Strap and buckle options on page 64



2CVAS.B21A

Ø 44mm, steel case
Black sunbrushed dial with Sally pin-up
Hand-sewn black calf leather strap
Limited edition: 100 pieces



2CVAS.B22A

Ø 44mm, steel case
Black sunbrushed dial with Anna pin-up
Hand-sewn green calf leather strap
Limited edition: 100 pieces



2CVAS.U05A

Ø 44mm, steel case
Blue sunbrushed dial with Lilly pin-up
Hand-sewn blue calf leather strap
Limited edition: 100 pieces



2CVAS.U04A

Ø 44mm, steel case
Blue sunbrushed dial with Nina pin-up
Hand-sewn blue calf leather strap
Limited edition: 100 pieces

USP

History of the Flying Tigers
Aged steel with grey PVD case: sophisticated accelerated aging process which gives the old metal aspect to the steel case initially coated with dark grey PVD
Green grained dial with radial gradient
Automatic chronograph
Day-date
Fast-action start / stop trigger
Aged coloured cotton canvas strap
Limited edition: 88 pieces

Functions

Chronograph (seconds, 30 minutes counter)
Day-date at 9 o'clock
Hours, minutes, seconds

Calibre

G1747, automatic chronograph
28'800 A/h (4Hz)
Incabloc shock absorber
25 jewels
Power reserve: 48 hours
Movement certification Chronofiable® (improved shock absorption)

Case

44 mm aged steel with grey PVD – old metal aspect
Aged steel with grey PVD fast-action start / stop trigger and reset pusher
Domed sapphire crystal, anti-reflective coating
Aged steel with grey PVD case back and see-through sapphire crystal

Bezel

Aged steel with grey PVD

Water resistance

330 feet / 100 m / 10 bar

Dial

Green grained dial with radial gradient and limited edition serial number
Bengal tiger head printed in the minutes counter
Two blue wings printed around the GRAHAM logo at 12
White Super-LumiNova hands, numerals and indexes
White chrono hand with red tip, blue seconds counter hand
Red minutes counter hand

Strap

Aged green cotton canvas
Titanium pin buckle

Strap and buckle options on page 64



2CVAV G03A

Ø 44mm, aged steel case with grey PVD
Green grained dial
Green canvas strap
Limited edition: 88 pieces

USP

Painted colourful Calavera skull at 6 inspired by the Mexican tradition on the Dia de Muertos (Day of the dead)
Aged steel with grey PVD case: sophisticated accelerated aging process which gives the old metal aspect to the steel case initially coated with dark grey PVD
Sandblasted dial
Automatic chronograph
Day-date
Fast-action start / stop trigger
Limited edition: 25 pieces

Functions

Chronograph (seconds, 30 minutes counter)
Day-date at 9 o'clock
Hours, minutes, seconds

Calibre

G1747, automatic chronograph
28'800 A/h (4Hz)
Incabloc shock absorber
25 jewels
Power reserve: 48 hours
Movement certification Chronofiable® (improved shock absorption)

Case

44 mm aged steel with grey PVD – old metal aspect
Aged steel with grey PVD fast-action start / stop trigger and reset pusher
Domed sapphire crystal, anti-reflective coating
See-through sapphire crystal with limited edition engraved

Bezel

Aged steel with grey PVD

Water resistance

330 feet / 100 m / 10 bar

Dial

Black sandblasted
Painted colourful Calavera skull at 6
Bone shaped 12 numeral coated with white
Super-LumiNova
Rhodium hands coated with white Super-LumiNova
Red chrono hand and minutes counter's hand

Strap

Black rubber mesh pattern
Steel pin buckle
Strap and buckle options on page 64



2CVAV B28A

Ø 44mm, aged steel case with grey PVD
Black sandblasted dial
Black rubber mesh pattern strap
Limited edition: 25 pieces

SWORDFISH & CHRONOFIGHTER VINTAGE – STRAPS

Canvas & Denim



	Size in mm	Green canvas	Blue denim	Beige canvas	Black denim
N° 0 (XS)	WS : 140 – 190	BRAT44B(*)	BRAT45B(*)	BRAT46B(*)	BRAT47B(*)
N°1 (M-L)	WS : 160 – 210	BRAT35B	BRAT37B	BRAT38B	BRAT39B
N°2 (XL)	WS : 180 – 230	BRAT49B(*)	On request	On request	On request

(*) : limited stock



	Size in mm	Green canvas
N° 0 (XS)	WS : 140 – 190	BRAT48B(*)
N°1 (M-L)	WS : 160 – 210	BRAT40B

Rubber strap



	Size in mm	Black	Blue	Green	Burgundy
N° 0 (XS)	WS : 140 – 190	BRAK134B	BRAK136B	BRAK138B	BRAK140B
N°1 (M-L)	WS : 160 – 210	BRAK133B	BRAK135B	BRAK137B	BRAK139B

The straps and buckles fit all Swordfish, Chronofighter Grand Vintage and Vintage models

Alligator



	Size in mm	Black
N° 0 (XS)	WS : 140 – 190	On request
N°1 (M-L)	WS : 160 – 210	BRAC187B(*)

Leather



	Size in mm	Brown	Black	Black - pink	Blue	Blue
N° 0 (XS)	WS : 140 – 190	BRAL137B	BRAL138B	BRAL149B(*)	BRAL140B	BRAL165B
N°1 (M-L)	WS : 160 – 210	BRAL126B	BRAL127B	BRAL147B(*)	BRAL129B	BRAL164B
N°2 (XL)	WS : 180 – 230	On request	On request	On request	BRAL146B(*)	



	Size in mm	Blue	Brown Vintage	Green	Camel
N° 0 (XS)	WS : 140 – 190	BRAL150B(*)	BRAL136B	BRAL145B	BRAL139B
N°1 (M-L)	WS : 160 – 210	BRAL148B(*)	BRAL132B	BRAL141B	BRAL128B

(*) : limited stock

The straps and buckles fit all Swordfish, Chronofighter Grand Vintage and Vintage models

Fabric
Delivered with 22 mm steel pin buckle.



	Size in mm	Green	Black & Gold	Black & Red	Blue
N° 1 (S-XL)	WS : 140 – 230	BRAT52B	BRAT53B	BRAT54B	BRAT55B

The straps and buckles fit all Swordfish, Chronofighter Grand Vintage and Vintage models

Leather (new collection)



	Size in mm	Camel	Black	Vintage	Bronze
N° 0 (XS)	WS : 140 – 190	BRAL153B	BRAL155B	BRAL157B	BRAL159B
N°1 (M-L)	WS : 160 – 210	BRAL152B	BRAL154B	BRAL156B	BRAL158B



	Size in mm	Blue	Green
N° 0 (XS)	WS : 140 – 190	BRAL161B	BRAL163B
N°1 (M-L)	WS : 160 – 210	BRAL160B	BRAL162B

(*) : limited stock

Buckles

Type
Pin buckle (20 mm)



Type
Folding buckle (20 mm)



Titanium
N / A

The straps and buckles fit all Swordfish, Chronofighter Grand Vintage and Vintage models

CHRONOFIGHTER SUPERLIGHT CARBON TOURBILLON

USP

Tourbillon – Chronograph – Automatic combined to the Superlight technology
 Extra-light Tourbillon cage: 0.485g
 Choc resistant and anti-magnetism
 Gold (18K) tourbillon upper barrette
 Column-wheel: black low-friction coating
 Oscillating mass with ceramic rolling
 Gold (18K) segment
 Superlight black carbon composite case
 Black carbon trigger, bezel, dial and buckle (3K carbon frame)
 Fast-action start / stop carbon trigger
 Domed see-through sapphire crystal case back
 Integrated black rubber strap with "Clous de Paris"
 Limited edition: 100 pieces

Functions

Tourbillon mechanism
 Column wheel chronograph (seconds, 30 minutes counter and 12 hours counter)
 Hours, minutes, seconds

Calibre

G1780, automatic column-wheel chronograph-tourbillon
 28'800 A/h (4Hz)
 Incabloc shock absorber
 Movement finished with perlage, Geneva stripes, manually chamfered & polished edges. Column wheel with polished segments on base cog wheel with black low-friction coating
 Tourbillon cage 0.485 grams: 48 components 18K solid gold components
 Off-centre construction at 4 o'clock, complete see-through tourbillon
 Tourbillon construction protected by two patents
 Double bridge construction with red gold (18K) upper bridge
 Black gold skeletonised rotor with 18K solid gold oscillating weight
 34 jewels
 Power reserve: 48 hours
 Movement certification Chronofiable® (improved shock absorption)

Case

47 mm superlight black carbon composite case
 Black carbon fast-action start / stop trigger

Black rubber reset pusher with "Clous de Paris" high grip pattern
 Domed sapphire crystal, anti-reflective coating on both faces
 Domed see-through sapphire crystal case back with red "superlight carbon" inscription and limited edition serial number engraved

Bezel

Black carbon bezel

Water resistance

330 feet / 100 m / 10 bar

Dial

Black carbon dial with white Super-LumiNova coated numerals
 Golden hands (5N) with white Super-LumiNova
 White varnish chrono hand
 Minutes counter with golden ring (5N) and white varnish hand
 Seconds counter with golden ring (5N) and golden hand (5N)
 Tourbillon inscription around the seconds counter

Strap

Integrated black rubber strap with "Clous de Paris"
 Black carbon pin buckle

Strap and buckle options on page 88

2CCBK.B35A

Ø 47mm superlight black carbon composite case
 Black carbon dial
 Black rubber strap with "Clous de Paris"
 Limited edition: 100 pieces



2CCBK.B35A

Available on different rubber, leather & canvas

USP

New technology: Superlight black carbon composite case
Black carbon trigger, bezel and buckle (3K carbon frame)
Black carbon bezel with golden filaments (2CCBK.B25B)
Automatic skeleton chronograph
Fast-action start / stop carbon trigger
Integrated black rubber strap with "Clous de Paris" decoration

Functions

Skeleton chronograph (seconds, 30 minutes counter)
Hours, minutes, seconds

Calibre

G1790 automatic skeleton chronograph with view on the balance wheel and escapement
Black & rhodium movement with hand-drawn strokes decoration
Openwork balance bridges and plates.
Oscillating weight with hand-drawn strokes decoration and snailed external segment
28'800 A/h (4Hz)
Incabloc shock absorber
29 jewels
Power reserve: 48 hours

Case

47 mm superlight black carbon composite case
Titanium casing ring with diamond's molecular structure (see page 37)
Black carbon fast-action start / stop trigger (3K carbon frame)
Black rubber reset pusher with "Clous de Paris" high grip pattern
Domed sapphire crystal, anti-reflective

coating on both faces

Smoked sapphire crystal caseback with with red "superlight carbon" inscription engraved

Bezel

Black carbon bezel (3K carbon frame) / with golden filaments (2CCBK.B25B)

Water resistance

330 feet / 100 m / 10 bar

Dial

Black skeleton movement with white Super-LumiNova graduation, hours and minutes hands
Red chrono, minutes and seconds counters' hands

Strap

Integrated black rubber strap with "Clous de Paris"
Additional white rubber strap (with 2CCBK.B25A.K102K additional black rubber strap)
Black carbon pin buckle (3K carbon frame)
Strap and buckle options on page 88



2CCBK.B25B

Ø 47mm superlight black carbon composite case
Black skeleton dial
Black carbon bezel with golden filaments
Integrated black rubber strap with "Clous de Paris"

CHRONOFIGHTER SUPERLIGHT CARBON SKELETON



2CCBK B25A

Ø 47mm superlight black carbon composite case
Black skeleton dial
Integrated white rubber strap with "Clous de Paris"



2CCBK B25A

Ø 47mm superlight black carbon composite case
Black skeleton dial
Integrated black rubber strap with "Clous de Paris"

USP

New technology: Superlight black carbon composite case
Black carbon trigger, bezel, dial and buckle (3K carbon frame)
Automatic chronograph
Tachymeter
Date at 8 o'clock
Fast-action start / stop carbon trigger
Integrated rubber strap with "Clous de Paris" decoration



2CCBK.V01A

Ø 47mm superlight black carbon composite case
Black carbon dial
Integrated purple rubber strap with «Clous de Paris»

Functions

Chronograph (seconds, 30 minutes counter)
Date at 8 o'clock
Hours, minutes, seconds

Calibre

G1747 automatic chronograph
28'800 A/h (4Hz)
Incabloc shock absorber
25 jewels
Power reserve: 48 hours
Movement certification Chronofiable® (improved shock absorption)

Case

47 mm superlight black carbon composite case
Black carbon fast-action start / stop trigger (3K carbon frame)
Black rubber reset pusher with "Clous de Paris" high grip pattern
Domed sapphire crystal, anti-reflective coating on both faces
Smoked sapphire crystal case back with coloured "superlight carbon" inscription engraved

Bezel

Black carbon bezel (3K carbon frame)

Water resistance

330 feet / 100 m / 10 bar

Dial

Black carbon dial (3K carbon frame) with white or green Super-LumiNova coated numerals and black snailed counters.
Reversed minutes counter with painted indicator to show starting-point
Black hands coated with white Super-LumiNova. Coloured chrono hand.
Coloured minutes and seconds counters' hands
Coloured graduation with tachymeter and minute scales

Strap

Integrated purple, green, orange, blue, yellow, red rubber strap with "Clous de Paris"
Additional black rubber strap
Black carbon pin buckle (3K carbon frame)
Strap and buckle options on page 88



2CCBK.G06A

Ø 47mm superlight black carbon composite case
Black carbon dial
Integrated green rubber strap with "Clous de Paris"



2CCBK.O01A

Ø 47mm superlight black carbon composite case
Black carbon dial
Integrated orange rubber strap with "Clous de Paris"



**CHRONOFIGHTER
SUPERLIGHT**

Automatic Chronograph
Full Carbon Watch

GRAHAM
CHRONOMETRIC SWITZERLAND

Boulevard des Eplatures 38, 2300 La Chaux-de-Fonds, Switzerland | +41 (0)32 910 98 88 | george@graham1695.com

www.graham1695.com



2CCBK B30A

Ø 47mm superlight black carbon composite case
Black carbon dial
Integrated blue rubber strap with «Clous de Paris»



2CCBK B15A

Ø 47mm superlight black carbon composite case
Black carbon dial
Integrated yellow rubber strap with "Clous de Paris"



2CCBK B17A

Ø 47mm superlight black carbon composite case
Black carbon dial
Integrated red rubber strap with "Clous de Paris"

USP

Automatic chronograph
Day-date at 9 o'clock
Fast-action start / stop trigger
Carbon trigger
Black ceramic (ZrO₂) bezel
Grey-tinted smoked dial
Black calf quilted strap

Functions

Chronograph (seconds, 30 minutes counter)
Day-date at 9 o'clock
Hours, minutes, seconds

Calibre

G1747 automatic chronograph
28'800 A/h (4Hz)
Incabloc shock absorber
25 jewels
Power reserve: 48 hours
Movement certification Chronofiable® (improved shock absorption)

Case

47 mm steel / steel with black PVD
Black carbon fast-action start / stop trigger
Steel / Steel with black PVD reset pusher with black rubber "Clous de Paris" high grip pattern
Domed sapphire crystal, anti-reflective coating on both faces
See-through (2CCAC.B33A) / smoked sapphire crystal case back

Bezel

Black ceramic (ZrO₂)

Water resistance

330 feet / 100 m / 10 bar

Dial

Grey-tinted smoked dial with white Super-LumiNova numerals (Grade A, highly luminescent) or beige Super-LumiNova (2CCAU.B32A)
Rhodiated / golden / black minute scale
Rhodiated/ golden or ruthenium hands with white or beige Super-LumiNova
Rhodiated / golden chrono hand with red tip / Beige chrono hand (2CCAU.B32A)
Red or beige minutes counter hand
Rhodiated, golden or grey seconds counter hand

Strap

Black calf quilted leather (beige on the edges 2CCAU.B32A)
Steel / Steel with black DLC pin buckle
Strap and buckle options on page 88



2CCAC.B33A

Ø 47mm steel case
Grey-tinted smoked dial
Black calf quilted strap



2CCAU.B31A

Ø 47mm steel with black PVD case
Grey-tinted smoked dial
Black calf quilted strap



2CCAU.B32A

Ø 47mm steel with black PVD case
Grey-tinted smoked dial
Black calf quilted strap

USP

Automatic chronograph
 Telemeter function to measure distances between an event and an observer based on the speed of sound. Temperature base: 25°C (Earth average temperature)
 Date at 8 o'clock
 Fast-action start / stop trigger
 Carbon trigger
 Black ceramic (ZrO₂) bezel
 Tinted and smoked dial
 Denim or canvas strap

Functions

Chronograph (seconds, 30 minutes counter)
 Date at 8 o'clock
 Hours, minutes, seconds

Calibre

G1747 automatic chronograph
 28'800 A/h (4Hz)
 Incabloc shock absorber
 25 jewels
 Power reserve: 48 hours
 Movement certification Chronofiable® (improved shock absorption)

Case

47 mm steel
 Black carbon fast-action start / stop trigger
 Steel reset pusher with black rubber "Clous de Paris" high grip pattern
 Domed sapphire crystal, anti-reflective coating on both faces
 See-through sapphire crystal case back

Bezel

Black ceramic (ZrO₂)

Water resistance

330 feet / 100 m / 10 bar

Dial

Grey-tinted / green-tinted / blue-tinted smoked dial with white Super-LumiNova numerals (Grade A, highly luminescent)
 White /yellow Super-LumiNova coated chrono, minutes and seconds counters (Grade A, highly luminescent)
 White /yellow and white telemeter scale (km)

Strap

Anthracite, blue denim or green canvas
 Steel pin buckle

Strap and buckle options on page 88



2CCAC.B16A

Ø 47mm steel case
 Grey-tinted smoked dial
 Anthracite denim strap



2CCAC.G03A

Ø 47 mm steel case
 Green-tinted smoked dial
 Green canvas strap



2CCAC.U04A

Ø 47mm steel case
 Blue-tinted smoked dial
 Blue denim strap



Night vision: highly luminescent coating on the dial
On these three models only

USP

Automatic chronograph
 Telemeter function to measure distances between an event and an observer based on the speed of sound. Temperature base: 25°C (Earth average temperature)
 Date at 8 o'clock
 Fast-action start / stop trigger
 Carbon trigger
 Ceramic (ZrO₂) bezel



2CCAUB02A

Ø 47 mm steel with black PVD case
 Black and beige dial
 Beige fabric strap

Functions

Chronograph (seconds, 30 minutes counter)
 Date at 8 o'clock
 Hours, minutes, seconds

Calibre

G1747 automatic chronograph
 28'800 A/h (4Hz)
 Incabloc shock absorber
 25 jewels
 Power reserve: 48 hours
 Movement certification Chronofiable® (improved shock absorption)

Case

47 mm steel / steel with black PVD
 Black carbon fast-action start / stop trigger
 Steel / steel with black PVD reset pusher with black rubber "Clous de Paris" high grip pattern
 Domed sapphire crystal, anti-reflective coating on both faces
 Smoked (black PVD versions) / See-through (steel versions) sapphire crystal case back

Bezel

Black ceramic (ZrO₂)

Water resistance

330 feet / 100 m / 10 bar

Dial

Black dial with beige or black Super-LumiNova numerals
 Grey and black dial with black Super-LumiNova numerals (2CCAUS01A / 2CCAC.S01A)
 Blue and black dial with white Super-LumiNova numerals (2CCAC.U01A)
 External rim with telemeter scale (Celsius/km)

Strap

Beige, black, blue fabric / Brown calf leather or integrated black rubber with "Clous de Paris"
 Black DLC (2CCAUS) / steel pin buckle (2CCAC)

Strap and buckle options on page 88



2CCAUS01A

Ø 47 mm steel with black PVD case
 Grey and black dial
 Black fabric strap



2CCAUB01A

Ø 47 mm steel with black PVD case
 Black and orange dial
 Black fabric strap



2CCAC.B02A

Ø 47mm steel
Black and beige dial
Brown calf leather strap



2CCAC.S01A

Ø 47mm steel
Grey and black dial
Black rubber strap with "Clous de Paris"



2CCAC.U01A

Ø 47mm steel
Blue and black dial
Blue fabric strap

USP

Automatic chronograph
Exclusive limited edition watch with Mandarin Chinese numerals
Date at 8 o'clock
Black carbon fast-action start/stop trigger
Black ceramic bezel
Telemeter function to measure distances between an event and an observer based on the speed of sound. Temperature base: 25°C (Earth average temperature)
Limited edition of 88 pieces (on the dial)

Functions

Chronograph (seconds, 30 minutes counter)
Date at 8 o'clock
Hours, minutes, seconds

Calibre

G1747, automatic chronograph
28'800 A/h (4Hz)
Incabloc shock absorber
25 jewels
Power reserve: 48 hours
Movement certification Chronofiable® (improved shock absorption)

Case

47 mm steel with black PVD
Black carbon fast-action start/stop trigger and black rubber reset pusher with "Clous de Paris" high grip pattern
Domed sapphire crystal, anti-reflective coating on both faces
Smoked sapphire crystal case back with limited edition serial number

Bezel

Black ceramic (ZrO2)

Water resistance

330 feet / 100 m / 10 bar

Dial

Black dial, black snail counters
Seconds' counter with limited edition number
Beige Super-LumiNova hands, Mandarin Chinese numerals, chrono and minutes counter hands
Telemeter scale (calculated 25°C and km)

Strap

Brown calf leather strap
Steel with black DLC pin buckle
Strap and buckle options on page 88



2CCAU B28A

Ø 47mm steel with black PVD case
Black dial
Brown calf leather strap
Limited edition : 88

CHRONOFIGHTER - STRAPS

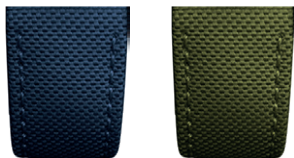
Fabric



	Size in mm	Black	Black / Red	Black / Yellow	Grey
N° 0 (XS)	WS : 145 – 195	BRAT23B	N/A	N/A	N/A
N°1 (M-L)	WS : 165 – 215	BRAT12B	BRAT19B	BRAT29B	BRAT14B
N°2 (XL)	WS : 185 – 235	BRAT20B	N/A	N/A	N/A



	Size in mm	Brown	Brown / Orange	Brown / Red	Brown / Green
N° 0 (XS)	WS : 145 – 195	BRAT24B	N/A	N/A	N/A
N°1 (M-L)	WS : 165 – 215	BRAT13B	BRAT27B	BRAT17B	BRAT26B
N°2 (XL)	WS : 185 – 235	BRAT16B	N/A	N/A	N/A



	Size in mm	Blue	Green
N° 0 (XS)	WS : 145 – 195	BRAT28B	BRAT25B
N°1 (M-L)	WS : 165 – 215	BRAT22B	BRAT15B
N°2 (XL)	WS : 185 – 235	N/A	BRAT21

Denim / Canvas



	Size in mm	Green	Beige	Blue denim	Black denim
N° 0 (XS)	WS : 145 – 195	BRAT43B	BRAT42B	BRAT44B	BRAT41B
N°1 (M-L)	WS : 165 – 215	BRAT31B	BRAT32B	BRAT33B	BRAT34B
N°2 (XL)	WS : 185 – 235	On request	On request	On request	On request

Leather



	Size in mm	Light Brown « Bomber jack »	Black leather	Brown « Vintage »
N° 0 (XS)	WS : 145 – 195	BRAL110B	N/A	On request
N°1 (M-L)	WS : 165 – 215	BRAL43B	BRAL44B	BRAL134B
N°2 (XL)	WS : 185 – 235	N/A	BRAL118B	On request

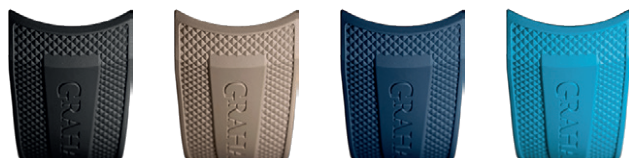
Quilted leather



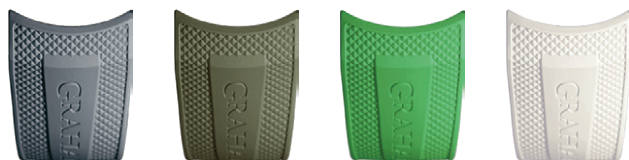
	Size in mm	Black	Black & beige side
N° 0 (XS)	WS : 145 – 195	N/A	N/A
N°1 (M-L)	WS : 165 – 215	BRAL143B	BRAL144B
N°2 (XL)	WS : 185 – 235	N/A	N/A

CHRONOFIGHTER - STRAPS

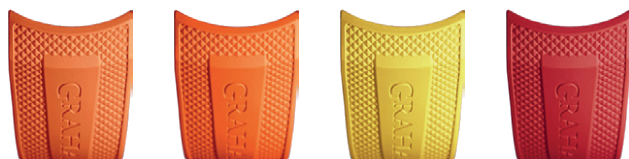
Integrated rubber



	Size in mm	Black	Brown	Blue	Blue
N° 0 (XS)	WS : 130 - 200	BRAK119B	N/A	BRAK120B	BRAK132B
N°1 (M-L)	WS : 150 - 230	BRAK92B	BRAK93B	BRAK96B	BRAK125B



	Size in mm	Grey	Green	Green 2	White
N° 0 (XS)	WS : 130 - 200	N/A	N/A	BRAK129B	BRAK118B
N°1 (M-L)	WS : 150 - 230	BRAK97B	BRAK94B	BRAK126B	BRAK102B



	Size in mm	Orange	Orange 2	Yellow	Red
N° 0 (XS)	WS : 130 - 200	N/A	BRAK130B	BRAK123B	BRAK121B
N°1 (M-L)	WS : 150 - 230	BRAK101B(*)	BRAK127B	BRAK103B	BRAK95B

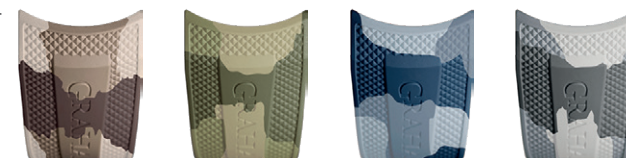
(*) : limited stock



	Size in mm	Purple
N° 0 (XS)	WS : 130 - 200	BRAK131B
N°1 (M-L)	WS : 150 - 230	BRAK128B

Integrated camouflage rubber

SOLD OUT



	Size in mm	Black	Brown	Blue	Red
N°1 (M-L)	WS : 150 - 230	BRAK110B	BRAK109B	BRAK112B	BRAK111B

Alligator



	Size in mm	Black	Brown
N°1 (M-L)	WS : 165 - 215	BRAC178B	BRAC179B

Buckles

Type
Pin buckle (20 mm)

Steel
BKF202S



Carbon
BKF209K

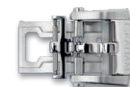


Steel black DLC
BKF209 H⁽¹⁾



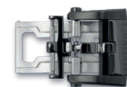
Type
Folding buckle (20 mm)

Steel
BDF206S



Carbon
N/A

Steel black DLC
BDF206N



⁽¹⁾ : The buckle BKF209H replaces the buckle BKF202H

USP

Mono-pusher movement – automatic chronograph
Automatic black PVD / gold (18K) Helium escape valve
Unidirectional rotating bezel (120 positions)
Black DLC (diamond-like carbon) case providing higher wear resistance
Water, shock and magnetism resistant to diver's specifications
Patented fast-action start / stop / reset trigger. Trigger integrated to the case and fully operational at 2000 feet
Black DLC / gold (18K) trigger. Black rubber coated / gold (18K) crown
Resistance to tarnishing under water
New luminescent coating: 30 % more luminescent – two types of luminescence
Shark stamped on the case back
Limited edition of 250 pieces (2CDAZ.B04A)

Functions

Chronograph (seconds, 30 minutes counter)
Date at 9 o'clock
Black DLC / gold (18K) automatic Helium escape valve
Hours, minutes, seconds

Calibre

G1750, automatic chronograph – mono-pusher movement
28'800 A/h (4Hz)
Incabloc shock absorber
25 jewels
Power reserve: 48 hours

Case

45 mm steel case with black DLC coating (diamond-like carbon)
Integrated black DLC/ gold (18K) fast-action trigger to activate start/stop/reset
Black rubber coated / gold (18K) crown with bayonet safety system (automatic locking) and red ring
Black PVD / gold (18K) automatic Helium escape valve
Domed sapphire crystal anti-reflective coating on both faces
Screwed steel with black DLC case back with shark stamped and limited edition serial number

Bezel

Steel with black DLC bezel
Unidirectional rotating bezel (120 positions) to measure dive time
Luminous indicator at 12 o'clock

Water resistance

2000 feet / 600 m / 60 bar

Dial

Black with grey indexes / black with golden indexes
Black chrono hand with orange tip, orange minutes counter's hand (2CDAB)
Golden hands coated with white Super-LumiNova, golden minute scale (2CDAZ)
Double luminescence indications: blue and green
Propeller-shaped seconds counter at 4 o'clock (running indicator)

Strap

Integrated black rubber / black alligator – Steel folding buckle with black DLC clasp and diver extension

Strap and buckle options on page 95



2CDAB.B02A

Ø 45mm steel case with DLC case
Black dial
Black rubber strap



2CDAZ.B04A

Ø 45mm steel with black DLC case with gold (18K) parts
Black and golden dial
Black alligator strap
Limited edition: 250



Shark stamped on the case back



CHRONOFIGHTER PRODIVE - STRAPS

Integrated rubber



	Size in mm	Black	Yellow	Blue
N°1 (M-L)	WS : 150 - 230	BRK80B	BRK88B	BRK87B

(1) : Only for the reference 2CDAV.B01A

Integrated alligator



	Size in mm	Black
N°1 (M-L)	WS : 170 - 210	BRAC160B

Buckles

Type
Folding buckle (20 mm)
+ diver extension

Steel black DLC
BDF207N



USP

GRAHAM icon
Automatic chronograph
GMT / second time zone
Big date with double discs at 12 o'clock
Decorated and sophisticated movement with blue screw
Sapphire bezel
Fast-action start / stop trigger

Functions

Chronograph (seconds, 30 minutes counter)
GMT / second time zone
Big date with double discs at 12 o'clock
Hours, minutes, seconds

Calibre

G1733, automatic chronograph
28'800 A/h (4Hz)
Incabloc shock absorber
28 jewels
Power reserve: 48 hours

Case

47 mm steel case
Steel with black PVD left hand fast-action start / stop trigger and reset pusher
Domed sapphire crystal, anti-reflective coating on both faces
See-through sapphire crystal case back / smoked sapphire crystal case back

Bezel

Steel and sapphire bezel (20VGS.B & 20VGS.U) with anti-reflective coating GMT scale

Water resistance

330 feet / 100 m / 10 bar

Dial

Blue or black with blue / silver/ green counters

Strap

Integrated blue / black alligator
Steel folding buckle

Strap and buckle options on page 101



20VGS.U06B

Ø 47mm steel case
Blue dial
Blue alligator strap



20VGS.B26A

Ø 47mm steel case
Black dial
Black alligator strap



20VGS.B12A

Ø 47mm steel case
Black dial
Black alligator strap

USP

GRAHAM icon
Automatic chronograph
GMT / second time zone
Big date with double discs at 12 o'clock
Decorated and sophisticated movement with blue screw
Sapphire bezel
Fast-action start / stop trigger

Functions

Chronograph (seconds, 30 minutes counter)
GMT / second time zone
Big date with double discs at 12 o'clock
Hours, minutes, seconds

Calibre

G1733, automatic chronograph
28'800 A/h (4Hz)
Incabloc shock absorber
28 jewels
Power reserve: 48 hours

Case

47 mm steel and gold (18K) case
Steel with black PVD left hand fast-action start / stop trigger and reset pusher
Red gold (18K) crown
Domed sapphire crystal, anti-reflective coating on both faces
See-through sapphire crystal case back

Bezel

Red gold (18K) and sapphire bezel – blue / black and green GMT scale

Water resistance

330 feet / 100 m / 10 bar

Dial

Black with blue / green counters

Strap

Integrated blue / black alligator
Steel folding buckle

Strap and buckle options on page 101



20VGG.B26A

Ø 47mm steel and red gold (18K) case
Black dial
Blue alligator strap



20VGG.B16A

Ø 47mm steel and red gold (18K) case
Black dial
Black alligator strap

CHRONOFIGHTER GMT - STRAPS

Integrated rubber



	Size in mm	Black	Blue 2
N° 0 (XS)	WS : 145 - 195	BRAK14B	N/A
N°1 (M-L)	WS : 165 - 215	BRAK10B	BRAK41B
N°2 (XL)	WS : 185 - 235	BRAK36B	N/A

Integrated rubber



	Size in mm	Black with orange stitches	Black with redstitches	Black with green stitches	Black with blue stitches
N°1 (M-L)	WS : 165 - 215	BRAC155B	BRAC132B	BRAC131B	BRAC133B



	Size in mm	Black	Blue	Dark Blue
N° 0 (XS)	WS : 145 - 185	BRAC120B	N/A	N/A
N°1 (M-L)	WS : 165 - 215	BRAC118B	BRAC89B	BRAC117B
N°2 (XL)	WS : 185 - 235	BRAC119B	N/A	N/A

Buckles

Type
Pin buckle

Steel
BKF202S



Titanium
BKF202T



Gold 5N
BKF202B



Type
Folding buckle

Steel
BDF206S



Titanium
N / A

Gold 5
BDF203RT



SOLD OUT

USP

GRAHAM Classic
Moon phase with white Super-LumiNova
Quartz chronograph – metal gold plating
Rattrapante
4 ½ year mercury free battery and end-of-life indication
Date at 6 o'clock
Fast-action start/stop trigger
Trigger set (close set) with a diamond (Top Wesselton, VS, 0.01 cts, Ø 1.20) in its end
Romantic (floral motif) engraving on the case back
Flinqué decorated dial adorned with 4 diamonds (Top Wesselton, VS, 0.04 cts, Ø 1.30)
Steel bezel adorned with 72 diamonds (Top Wesselton, VS, 0.65 cts, Ø 1.30) (2CXCS only)

Functions

Quartz chronograph (seconds, minutes).
Moon phase. Rattrapante.
Date at 6 o'clock
Hours, minutes, seconds

Calibre

G1650, quartz chronograph, metal gold plating
3 jewels
Power reserve: 4 ½ year mercury free battery. EOL (end-of-life indication)

Case

36 mm steel
Fast-action start/stop trigger set with diamond in its end (Top Wesselton, 0.01 carat, VS, Ø1.20) and reset pusher
Domed sapphire crystal with anti-reflective coating on both faces
Domed steel case back with floral pattern engraved

Bezel

Steel bezel (2CXCS only : adorned with 72 diamonds
(Top Wesselton, 0.65 carats, VS, Ø1.30)

Water resistance

160 feet / 50 m / 5 bar

Dial

White / Grey / Black flinqué decorated.
4 quarter-hours set with diamond (Top Wesselton, 0.04 cts, VS, Ø1.30)
Moon phase with lunation disc at 12 o'clock, coated with white Super-LumiNova

Strap

Glossy white, grey and black lizard leather
Steel pin buckle

Strap and buckle options on page 105



2CXBS.S06A

Ø 36mm steel case with a diamond (0.01cts)
White dial – 4 diamonds (0.04 cts)
White lizard leather strap



Engraved case back with floral motif



2CXBS.A02A

Ø 36mm steel case with a diamond (0.01cts)
Grey dial – 4 diamonds (0.04 cts)
Grey lizard leather strap



2CXBS.B04A

Ø 36mm steel with a diamond (0.01cts)
Black dial – 4 diamonds (0.04 cts)
Black lizard leather strap



2CXCS.S06A

Ø 36mm steel case with 73 diamonds (0.66cts)
White dial – 4 diamonds (0.04 cts)
White lizard leather strap



Moon phase and central hands coated with white
Super-LumiNova (blue light)



2CXCS.A02A

Ø 36mm steel case with 73 diamonds (0.66cts)
Grey dial – 4 diamonds (0.04 cts)
Grey lizard leather strap



2CXCS.B04A

Ø 36mm steel case with 73 diamonds (0.66cts)
Black dial – 4 diamonds (0.04 cts)
Black lizard leather strap

CHRONOFIGHTER CLASSIC – STRAPS

Glossy Lizard



	Size in mm	Grey	Black	White	Red
N°1 (M-L)	WS : 150 - 185	BRAL108B	BRAL109B	BRAL107B	BRAL113B
N°2 (L)	WS : 170 - 205	BRAL112B	Upon request	BRAL123B	BRAL120B



	Size in mm	Blue
N°1 (M-L)	WS : 150 - 185	BRAL114B
N°2 (L)	WS : 170 - 205	Upon request

Glossy Alligator



	Size in mm	Grey	Black	White
N°1 (M-L)	WS : 150 - 185	BRAC158B	BRAC159B	BRAC157B



	Size in mm	Blue pastel	Green pastel	Pink pastel	Purple pastel
N°1 (M-L)	WS : 150 - 185	BRAC170B	BRAC171B	BRAC168B	BRAC169B

Buckles

Type
Pin buckle

Steel
BKF207S



USP

Automatic chronograph featuring racing colours
Openwork oscillating weight with hand-drawn strokes and snailed external segment
Tachymeter
Day-date at 3 o'clock
Coloured composite resin bezel. Additional coloured composite resin ring under the bezel
Coloured checkered dial
Seconds counter at 9 o'clock shaped as automobile brake discs

Functions

Automatic chronograph (seconds, 30 minutes and 12 hours counters)
Day-date at 3 o'clock
Hours, minutes, seconds

Calibre

G1749, automatic chronograph
28'800 A/h (4Hz)
Incabloc shock absorber
25 jewels
Power reserve: 48 hours
Movement certification Chronofiable® (improved shock absorption)

Case

46 mm steel
Steel control pushers – "RS" inscription engraved on the crown
Domed sapphire crystal, anti-reflective coating on both faces
See-through sapphire crystal case back

Bezel

Blue / green / black composite resin bezel with white tachymeter scale
Orange / yellow / red / black composite resin ring under the bezel

Water resistance

330 feet / 100 m / 10 bar

Dial

Blue / black checkered dial with coloured minute scale
Orange/ yellow / red/ neon orange chrono, minutes and seconds counters' hands
Automobile brake disc-shaped seconds counter with orange/yellow/red/neon orange indicator
Day-date at 3 o'clock

Strap

Integrated tyre tread rubber with coloured inset.
Steel folding buckle

Strap and buckle options on page 110



2STEA.B15A

Ø 46mm steel case
Black, red and yellow dial
Red tyre tread rubber strap with yellow inset



Available on metal bracelet at no additional cost



2STEA.U02A

Ø 46mm steel case
Blue, white and red dial
Blue tyre tread rubber strap with red inset



2STEA.B12A

Ø 46mm steel case
Black, white and neon orange dial
White tyre tread rubber strap with black inset

USP

Automatic chronograph
Decorated and refined movement exclusively made for GRAHAM
Flyback – red aluminium flyback/reset pusher at 4 o'clock
GMT / second time zone
Tachymeter
Big date with double disc at 6 o'clock
Crown secured by a bayonet safety system (automatic locking)
Black ceramic bezel with beige GMT graduation. Additional red aluminium ring with « Clous de Paris » decoration under the bezel
Limited edition of 250 each

Functions

Automatic chronograph (seconds, 30 minutes counter).
Flyback
GMT/Second time zone
Big date with double disc at 6 o'clock
Hours, minutes, seconds

Calibre

G1721, automatic chronograph
28'800 A/h (4Hz)
Incabloc shock absorber
28 jewels
Power reserve: 48 hours

Case

46 mm steel
Steel start/stop pusher with red rubber catch and crown secured with bayonet safety system (automatic locking) and red ring – "RS" inscription engraved
Red aluminium flyback/reset pusher at 4 o'clock
Sapphire crystal, anti-reflective coating on both faces
See-through sapphire crystal case back with limited edition serial number

Bezel

Black ceramic bezel with beige GMT graduation
Red aluminium ring with "Clous de Paris" decoration under the bezel

Water resistance

330 feet / 100 m / 10 bar

Dial

Black-smoked openwork dial, white minute scale (1/8th second graduation)
Beige tachymeter scale
White /beige Super-LumiNova hands. Red chrono, minutes and seconds counters' hands
Black GMT hand with white Super-LumiNova tip and red contour
Big date with double disc at 6 o'clock

Strap

Integrated white tyre tread rubber strap with black inset / beige quilted leather (black underside and edges)
Steel folding buckle

Strap and buckle options on page 110



2STDC.B08B

Steel case
Ø 46mm, black and smoked openwork dial
White tyre tread rubber strap with black inset
Limited edition: 250 pieces



2STDC.B08A

Steel case
Ø 46mm, black and smoked openwork dial
Beige quilted leather strap
Limited edition: 250 pieces

SILVERSTONE RS

Integrated rubber



	Size in mm	Black - Red	Black - Green	Black - Blue	Black - Black
N°1 (S-XL)	WS : 170 - 230	BRAK89F	BRAK90F	BRAK91F	BRAK100B



	Size in mm	Black - Yellow	Black - Beige	Black - Orange	Black - White
N°1 (S-XL)	WS : 170 - 230	BRAK104B	BRAK105B	BRAK98B	BRAK113B



	Size in mm	Blue - Yellow	Blue - Red	Blue - Orange
N°1 (S-XL)	WS : 170 - 230	BRAK106B	BRAK107B	BRAK117B



	Size in mm	White - black	Red - Yellow
N°1 (S-XL)	WS : 170 - 230	BRAK108B	BRAK116B

Integrated leather :



	Size in mm	Beige	Black
N° 0 (XS)	WS : 150 - 190	BRAL124B	BRAL125B
N°1 (M-L)	WS : 170 - 210	BRAL119B	BRAL122B

Integrated alligator



	Size in mm	Black	Braun
N° 0 (XS)	WS : 140 - 180	BRAC174B	BRAC177B
N°1 (M-L)	WS : 170 - 210	BRAC160B	BRAC175B

Metal



	Size in mm	Metal
N°1 (S-XL)	WS 150 - 230	BRAA26F

Buckles

Type
Folding buckle (20 mm)

Steel
BDF206S

Steel black DLC
BDF206N



USP

60-second see-through Tourbillon; Automatic micro-rotor movement.
 Swiss made manufactured high precision movement made for GRAHAM
 Power reserve: 3 days
 Tourbillon cage: 67 components. Double bridge construction with blue (2GGCP.W01A) screws
 Pink gold (18K) case. Ultra-thin case: 9.85mm
 Golden micro-rotor oscillating weight which ensures ultra-thinness
 Limited edition: 100

Functions

60-second see-through Tourbillon (3Hz).
 Automatic micro-rotor movement
 Hours, minutes, seconds

Calibre

G1796, 60-second see-through Tourbillon
 Swiss-made manufactured movement
 with Haute Horlogerie finishing, circular
 "Côtes de Genève" decoration, circular
 graining, chamfered and polished bridges
 and bottom plate
 Golden micro-rotor oscillating weight
 to ensure thinness with ornamental
 arabesque engraved inspired by George
 Graham decoration
 Tourbillon cage with 67 components.
 Double bridge construction with blue screws
 Balance wheel with regulating screws
 21'600 A/h (3Hz), Incabloc shock absorber
 29 jewels
 Power reserve: 72 hours

Case

40 mm pink gold (18K). Ultra-thin case:
 9.85 mm
 Pink gold crown (18K) with "Geo."
 engraving representing

George Graham's signature on his work
 Sapphire crystal glass box (2.98mm thick)
 with anti-reflective coating on both faces
 Sapphire crystal glass box (3.35mm thick)
 on the case back with special slot for the
 oscillating weight

Bezel

Pink gold (18K) bezel

Water resistance

160 feet / 50 m / 5 bar

Dial

Domed dial coated with white enamel
 lacquer
 Black Roman and Arabic numerals inspired
 by George Graham timepieces
 Minute scale with 4 quarter-hours marked
 with symbols inspired by George Graham's
 timepieces
 Blue central hands

Strap

Black alligator
 Pink gold (18K) pin buckle
Strap & buckle options on page 115



Ø 40mm pink gold (18K) case
 White enamel lacquered dial
 Black alligator strap
Limited edition: 100

2GGCP.W01A



Micro -rotor oscillating weight with orne-
 mental arabesque engraved inspired by
 George Graham decoration

SOLD OUT



2GGCP001A

Ø 40mm pink gold (18K) case
Domed brown-tinted smoked sapphire dial
Hand-sewn brown alligator strap
Limited edition: 8



2GGCP002A

Ø 40mm pink gold (18K) case
Domed blue-tinted smoked sapphire dial
Hand-sewn blue alligator strap
Limited edition: 8

GEO.GRAHAM TOURBILLON - STRAPS

Alligator



	Size in mm	Black	Brown	Light Brown "Gold"
N° 0 (XS)	WS : 140 - 190	BRAC144B	BRAC145B	BRAC146B
N°1 (M-L)	WS : 160 - 210	BRAC137B	BRAC138B	BRAC139B

Alligator (hand sewn)



	Size in mm	Blue	Brown
N° 0 (XS)	WS : 140 - 190	On request	On request
N°1 (M-L)	WS : 160 - 210	BRAC183B	BRAC184B

Buckles

Type
Pin buckle (18 mm)

Massive Gold 4N
BKF205P



USP

Manual Tourbillon Orrery

Decorated and refined movement exclusively made for GRAHAM by Manufacture Christophe Claret
Mechanical Solar System model (Moon, Earth, Mars) with 300 years calendar in total

Pink gold 18K

Genuine fragments of the Moon and Mars. The Earth is made of Kingman Turquoise

Hand-engraved pink gold (18K) Tourbillon bridge with 2 Phoenix heads inspired by George Graham and a cabochon close set diamond

Limited edition: 8

Functions

Manual Tourbillon Orrery, mechanical solar system model with 100 years calendar (two additional graduations of 100 years – 300 years in total)

Year counter on the case back with planet correction indicators. (Moon: 7 years, Earth: 1156 years, Mars: 25 years)
Hours, minutes

Calibre

G1800, Tourbillon Orrery

high precision mechanical movement by Manufacture Christophe Claret

21'600 A/h (3Hz)

Incabloc shock absorber

35 jewels

Power reserve: 72 hours with 2 barrels

Case

48 mm pink gold (18K)

17.60 mm thick

Pink gold (18K) right hand control crowns (planets' crown at 2 o'clock which also enables to set the calendar, manual winding and time crown at 3 o'clock)

Moon corrector at 4 o'clock

Mars corrector at 10 o'clock

Dome sapphire crystal (semi-spherical), anti-reflective coating on both faces

See-through sapphire crystal case back with 100-year scale, Moon and Mars correction indicators and serial number hand-engraved

Bezel

Pink gold (18K) bezel

Water resistance

160 feet / 50 m / 5 bar

Dial

Blue lacquered dial with Geo.Graham Tourbillon Orrery inscription at 4 o'clock

3 scales: Hours and minutes scale, Gregorian calendar (365.25 days), Zodiac scale (12 astrological signs)

Solar system: The Moon (from NWA4881 meteorite, Ø0.90mm), The Earth (Kingman Turquoise, Ø3.20mm), Mars (from Tissint meteorite, Ø1.70mm),

The Sun (pink gold (18K) – hand-engraved Tourbillon bridge with 2 Phoenix heads inspired by George Graham decoration and a cabochon close set diamond at the centre

Off-centre skeleton pink gold (18K) hands with white Super-LumiNova coating

Strap

Hand-sewn blue alligator.

Pink gold (18K) folding buckle

Strap and buckle options on page 122



2GGBPU01A

Ø 48mm pink gold (18K) case
Blue lacquered dial with solar system (genuine fragments of planets)
Hand-sewn blue alligator strap
Limited edition : 8



See-through sapphire crystal case back with 100-year scale
Moon and Mars correction indicators and serial number hand-engraved



GEO. GRAHAM
TOURBILLON ORRERY

Manual Tourbillon Orrery
Mechanical Solar System model with 300 years calendar
Genuine fragments of the Moon, Mars.
The Earth is made of Kingman Turquoise
Hand-engraved Tourbillon bridge with 2 Phoenix heads
48 mm pink gold case
Limited edition of 8

GRAHAM
WATCHMAKERS SINCE 1815

Boulevard des Eplatures 38, 2300 La Chaux-de-Fonds, Switzerland | +41 (0)32 910 98 88 | george@graham1695.com

www.graham1695.com



GEO. GRAHAM
TOURBILLON ORRERY

Manual Tourbillon Orrery
Mechanical Solar System model with 300 years calendar
The Earth is made of blue sapphire
Mars made of ruby
Hand-engraved Tourbillon bridge with 2 Phoenix heads
48 mm pink gold case
Limited edition of 8

GRAHAM
WATCHMAKERS SINCE 1815

Boulevard des Eplatures 38, 2300 La Chaux-de-Fonds, Switzerland | +41 (0)32 910 98 88 | george@graham1695.com

www.graham1695.com

USP

Manual Tourbillon Orrery

Decorated and refined movement exclusively made for GRAHAM by Manufacture Christophe Claret

Mechanical Solar System model (Moon, Earth, Mars) with 300 years calendar in total

Pink gold 18K

Hand-engraved pink gold (18K) Tourbillon bridge with 2 Phoenix heads

inspired by George Graham and a cabochon close set diamond

Limited edition: 20

Functions

Manual Tourbillon Orrery, mechanical solar system model with 100 years calendar (two additional graduations of 100 years – 300 years in total)

Year counter on the case back with planet correction indicators. (Moon: 7 years, Earth: 1156 years, Mars: 25 years)
Hours, minutes

Calibre

G1800, Tourbillon Orrery high precision mechanical movement by Manufacture Christophe Claret
21'600 A/h (3Hz)
Incabloc shock absorber
35 jewels
Power reserve: 72 hours with 2 barrels

Case

48 mm pink gold (18K)
17.60 mm thick
Pink gold (18K) right hand control crowns (planets' crown at 2 o'clock which also enables to set the calendar, manual winding and time crown at 3 o'clock)
Moon corrector at 4 o'clock
Mars corrector at 10 o'clock
Dome sapphire crystal (semi-spherical), anti-reflective coating on both faces
See-through sapphire crystal case back

with 100-year scale, Moon and Mars correction indicators and serial number hand-engraved

Bezel

Pink gold (18K) bezel

Water resistance

160 feet / 50 m / 5 bar

Dial

Black dial with Geo.Graham Tourbillon Orrery inscription at 4 o'clock
3 scales: Hours and minutes scale, Gregorian calendar (365.25 days), Zodiac scale (12 astrological signs)
Solar system: The Moon (rhodium, Ø0.90mm), The Earth (blue sapphire, Ø3.20mm), Mars (ruby, Ø1.70mm), The Sun (pink gold (18K) – hand-engraved)
Tourbillon bridge with 2 Phoenix heads inspired by George Graham decoration and a cabochon close set diamond at the centre
Off-centre skeleton pink gold (18K) hands with black Super-LumiNova coating

Strap

Hand-sewn black alligator

Pink gold (18K) folding buckle

Strap and buckle options on page 122



Ø 48mm pink gold (18K) case
Black dial with solar system
Hand-sewn black alligator strap
Limited edition : 20

2GGBP.B01A



See-through sapphire crystal case back
with 100-year scale
Moon and Mars correction indicators and
serial number hand-engraved



	Size in mm	Black	Blue
N° 0 (XS)	WS : 140 – 190	BRAC172B	BRAC186B
N°1 (M-L)	WS : 160 – 210	BRAC154B	BRAC185B
N°2 (XL)	WS : 180 – 230	Upon request	Upon request

Buckles

Type
Pin buckle

Massive Gold 4N
BKF208P



Type
Folding buckle

Massive Gold 4N
BDF208P



Precious oak-tree watch box with patinated bronze medallion inspired by Copernicus stellar map
PEFC certification (responsible forest management)
Two additionnal case backs of 100 years each – 300 years ajustement
Pink gold (18K) corrector
Magnifying glass with genuine leather covered handle
Watch warranty

**REPAIR
TOOL KIT**

**STRAP INS-
TRUCTIONS**

**WATCH
BOX REVIEW**

**DISPLAY
FIXTURES**

Includes tools to repair the below models:

Chronofighter Classic (1695) – 2CXAS, 2CXAP, 2CXAY
 Chronofighter Classic (1695 – Romantic) – 2CXMS, 2CXNS
 Chronofighter Classic (1695 – Lady Moon) – 2CXBS, 2XCXS
 Chronofighter – 2CCAC, 2CCAD, 2CCAS, 2CCAU
 Chronofighter GMT – 2OVGS, 2OVGG
 Silverstone Timezone – 2TZAS
 Silverstone Stowe & Stowe 44 & Stowe GMT – 2BLCB, 2BLCD, 2BLCH, 2BLDC
 Silverstone Vintage – 2SABS
 Silverstone RS Skeleton – 2STAC, 2STAB, 2STAG, 2STAZ
 Silverstone RS Endurance – 2STCB
 Silverstone RS Supersprint – 2STBC

Also included:

Tool to remove and to fix the sapphire
 crystal, case back
 Tool to change the pushers
 Tool to glue the bezel
 Screwdrivers and a torque system
 (removable drum)
 Clam, screws and springbar for all the
 collection
 Special tools to repair the GRAHAM
 calibres: G1702, G1790



Aftersales tool case including 5 foam trays
 Available for authorized service center
 Contact your market coordinator for any order

HOW TO CHOOSE THE SIZE OF STRAP

We have 3 different lengths for the Graham straps. The first size is the number 0 (XS) for the small wrist, the second size is the number 1 (M-L) for the medium and large wrist and the third size is 3 (XL) for the extra large wrist.

The first step is to find the best size for your bracelet.

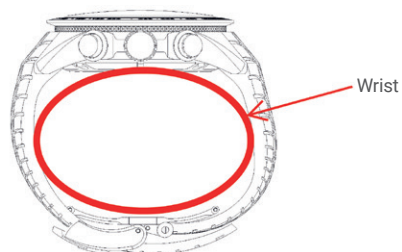
It's necessary to measure your wrist size. You can use a specific tool (see picture below) or use a measuring tape



The second step is to choose the best length for your wrist. You have a table with the lengths and the middle of straps. The best size is if you have the buckle is the middle of strap with holes. You choose the strap with the middle is near your wrist

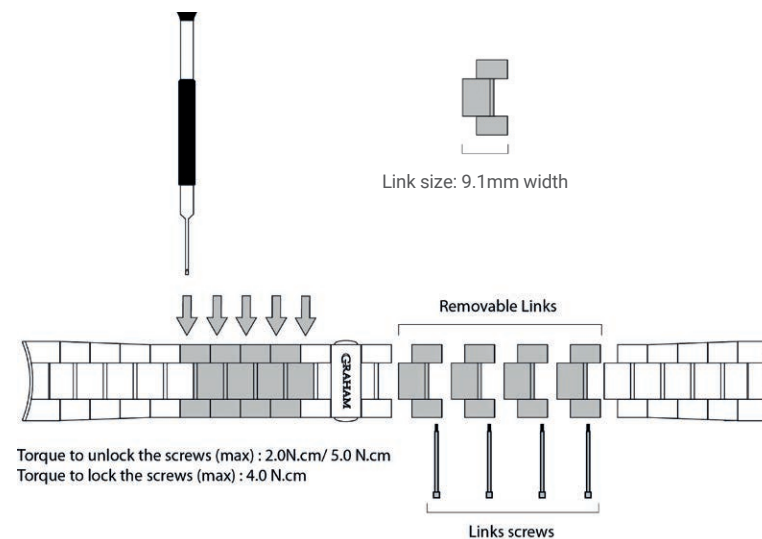
Examples :

- 1) If you have a wrist size = 180 mm, you choose the strap N° 1 (M-L)
- 2) If you have a wrist size = 215 mm, you choose the strap N° 2 (XL)
- 3) If you have a wrist size = 150 mm, you choose the strap N° 0 (XS)



	Size of strap in mm				Size of strap in inch			
	Men		Women		Men		Women	
	Length	Middle	Length	Middle	Length	Middle	Length	Middle
N°1 (S-XL)	140 - 190	165	120 - 170	145	5½ - 7½	6½	4¾ - 6¾	5¾
N°1 (M-L)	160 - 210	185	140 - 190	165	6¼ - 8¼	7¼	5½ - 7½	6½
N°2 (XL)	180 - 230	205	160 - 210	185	7 - 9	8	6¼ - 8¼	7¼

HOW TO RESIZE YOUR METAL BRACELET - ADD OR REMOVE LINKS



Removing more than a link: remove links on both sides to keep the strap balanced
If needed, apply thread lock fluid on the screw before re-tightening

HOW TO KEEP YOUR RUBBER STRAP CLEAN

Regular cleaning

Apply a small amount of hand soap and water delicately on the rubber strap
Rub gently
Wipe with absorbent cotton dipped in clear water
Leave it to dry

Deep cleaning

Dip a cotton swab in acetone
Rub gently the rubber strap
Wipe with absorbent cotton dipped in clear water
Leave it dry



ADDITIONAL WATCH STRAPS

Kit reference - ENV051



Rubber strap



	Size in mm	Black	Blue	Green	Burgundy
N°1 (M-L)	WS 160 - 210	BRAK133B	BRAK135B	BRAK137B	BRAK139B

Leather



	Size in mm	Brown Vintage	Green	Camel
N°1 (M-L)	WS 160 - 210	BRAL132B	BRAL141B	BRAL128B

Leather
(new collection)



	Size in mm	Vintage	Bronze		Size in mm	Red canvas	Black denim
N°1 (M-L)	WS 160 - 210	BRAL156B	BRAL158B	N°1 (M-L)	WS 160 - 210	BRAT40B	BRAT39B

Fabric



	Size in mm	Black & Red	Blue
N°1 (S-XL)	WS 140 - 230	BRAT54B	BRAT55B

Price: upon request - No minimum order quantity

Delivery: 4 to 6 weeks

Strap delivered with inserted spring bars. BRAT40B available in August 2018

Please contact your market coordinator for more information

UNDER DEVELOPMENT WATCH BOX



New standard watch box under development
Starting next year



UNDER DEVELOPMENT DISPLAY



New convertible display under development
Three base plates with cushions and two backwalls
Tilting system under each base plate
Pre-orders can be placed, contact your market coordinator



CURRENT WATCH BOX



Ladies watch box
White lacquered wood box with silver logo
Not sold separately – contact your market coordinator



Standard watch box
Black glossy lacquered wood box with silver logo
Not sold separately – contact your market coordinator



Display fixtures / Collection presentation on GRAHAM display



Display fixtures / Collection presentation on GRAHAM display

All rights reserved to GRAHAM SA
GRAHAM SA reserves the right to modify the content without notice

GRAHAM SA

Boulevard des Eplatures 38 | 2300 La Chaux-de-Fonds | Switzerland
T. +41 (0)32 910 98 88 | F. +41 (0)32 910 98 89
george@graham1695.com | www.graham1695.com



